

ACTA BIOLOGICA VENEZUELICA

UNIVERSIDAD CENTRAL DE VENEZUELA

FACULTAD DE CIENCIAS

ESCUELA DE BIOLOGÍA

CARACAS - VENEZUELA

Vol. 2, Art. 18

30 de abril de 1958

RESULTADOS ZOOLOGICOS DE LA EXPEDICION
DE LA UNIVERSIDAD CENTRAL DE VENEZUELA
A LA REGION DEL AUYANTEPUI EN LA GUAYANA
VENEZOLANA, ABRIL DE 1956

3. A NEW SPECIES AND SUBSPECIES OF MALLOPHAGA FROM VENEZUELA

NEOTROPICAL MISCELLANY Nº 10

by

M. A. Carriker, Jr. (1)

I recently received from Dr. F. FERNÁNDEZ YÉPEZ (2) a small, but very interesting lot of *Mallophaga* which were collected at Uruyén and Guayaraca, Estado Bolívar, Venezuela, during the Auyantepui expedition of the Universidad Central de Venezuela. There were four species from *Tinamus m. major*, of which the *Kelloggia* proved to be a new subspecies, this genus not having heretofore been taken on that host and a single female of the genus *Eureum* from *Cypseloides r. rutila*, which proved to be an exceedingly interesting form, apparently new to science, and which is described below, together with the new race of *Kelloggia*.

(1) Popayán, Colombia.

(2) Facultad de Agronomía, Universidad Central de Venezuela, Maracay, Aragua-Venezuela.

The new species of *Eureum* has been named after Dr. FERNÁNDEZ YÉPEZ, in honor of his untiring work as editor of the Boletín de Entomología Venezolana, in which so many papers by the author have been published.

Eureum yepezi n. sp.

fig. 1 and 1^a

Type, ♀ adult, from, *Cypseloides rutila rutila* (VIEILLOT) collected by Dr. F. FERNÁNDEZ YÉPEZ at Uruyén, Estado Bolívar, Venezuela, April 13, 1956.

Before describing this species I wish to give a short synopsis of the species contained in the genus *Eureum* NITZSCH.

A small genus of *Amblycera*, known presently to be parasitic only on the family *Apodidae* (the Swifts). The genotype is *E. cimicodes* BURM., from *Apus a. apus* (LINNÉ). At present there seem to be but five known species of the genus, the genotype, *E. ewingi* EICHLER (from *Chaetura pelagica*), and three species from genus *Callocalia* (Pacific Islands), viz.: *pacificum* CARRIKER, 1940, *mumfordi* THOMPSON, 1941 and *salangane* EICHLER, 1942.

The only complete figure of *E. cimicodes* ever published is that by DENNY (Mon. Anopl. Brit., 1842, pl. 22, fig. 4). EWING published a good figure of the head and prothorax of what he supposed was *cimicodes*, but it turned out to be something else and was renamed by EICHLER, *ewingi*. The published descriptions of *E. cimicodes* are all very incomplete, omitting many important details. Personally, I have never seen an authentic specimen of the species but from all that I can gather, the new species described here is quite different from it, and all of the remaining species of the genus.

DIAGNOSIS. — It may be clearly seen that *yepezi* is very different from *ewingi* by comparing the figure of the head and thorax published by EWING (Proc. U. S. Nat. Mus., Vol. 77, Art. 20, p. 11) with that of the present species.

It is also very different from *E. pacificum*, as may be seen from the figure published by the author of that species (Proc. U. S. Nat. Mus., Vol. 100, N^o 3254, p. 15).

In comparing *yepezi* with DENNY's description of *cimicodes* we find the following differences: The head is smaller, especially narrower; thorax and abdomen narrower, especially the latter, which in *cimicodes* is wider than long, but in *yepezi* much longer than wide. There is no visible division of pterothorax into meso and metathorax, as in *cimicodes*.

The chaetotaxy of the abdomen and legs is very different, as well as the shape of the apical segments of the abdomen. The pointed projection at inner portion of posterior margin of temples, so prominent in other species of the genus, is replaced by a parallell-sided projection with rounded tip, which is apparently fused with the prothorax; the maxillary palpi are not long and thick and there is but one spine on the anterolateral portion of the prothorax, instead of two. DENNY says: "lateral margin (abdomen) serrulate, the angles of each segment produced, acute, and terminated by a small tuft of long hairs". This is entirely different from the chaetotaxy and shape of the postero-lateral angles in *yepezi*, which has the angles rounded, and on segments I to V there are 4 to 5 thick spines, with 2 rather long setae in

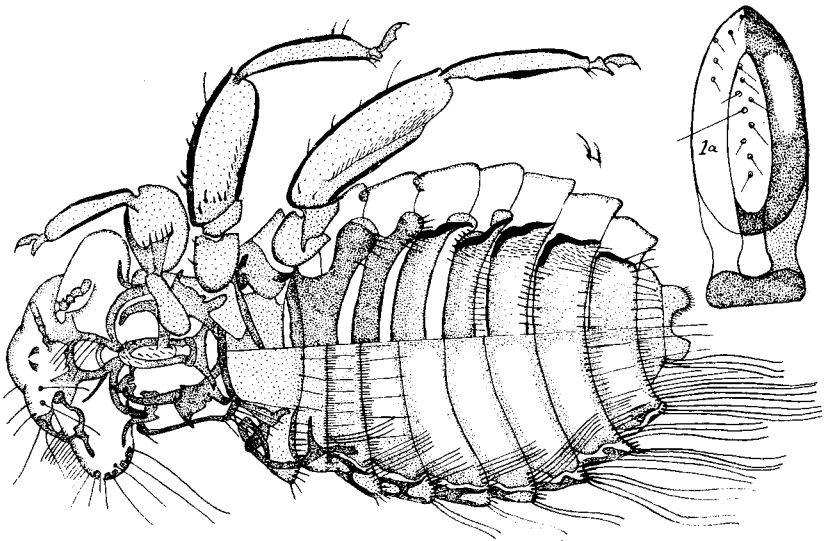


FIG. 1 AND 1A.

Eureka yepezi sp. Head, thorax and abdominal segments of ♀.

the angle of III to V and more in remaining segments; there are rows of 3 to 10 long setae on segments I to IX, on posterior margin of tergites, just within the pleurites.

On the posterior margin of the tergites there are about 10 rather long, slender setae, widely spaced and between these short, fine, very closely spaced setae.

The sternites are entire but widely separated from the pleurites and with lateral ends of very complicated shape, and set with 4 to 7 heavy spines on segments II to IV. Sternite I covers both segment I and II. In lateral portion of sternites V to VII is a large patch of very short, fine setae, also a fringe of same on posterior margin of segment IX.

In *cimicodes* the legs are furnished with many setae on femora and tibiae while in *yepezi* there are very few. There is a long, narrow patch of very fine, short setae on femora 3, with spines and a single row of short setae on 2nd. femora, while on the 1st. there is a transverse row of short spines in basal portion. The pronotum is somewhat similiar in shape to that of *ewingi*, but the chaetotaxy is very different (see enlarged fig. 1³).

NOTE. — This species is not a typical *Eureum*, possessing certain characters of the genus *Dennyus*, some of *Eureum*, and others differing from both.

The shape of the abdomen, together with the spines at lateral angles of the segments are more like *Dennyus*; the shape of head, long setae on abdominal tergites and short pterothorax are typical of *Eureum*, while the undivided pterothorax, patches of fine setae at sides of sternite VII, chaetotaxy of legs and peculiar sternites are unlike either *Dennyus* or *Eureum*.

However the preponderance of characters seem to be those of *Eureum*, and it seems best to place the species in that genus, at least for the present.

Eleven species of *Dennyus* have been examined in connection with the study of *E. yepezi*.

Measurements of the type:

	length	width
Body	4.25	—
Head	0.88	1.52
Prothorax (dorsum)	1.09	1.04 (anterior end)
Prothorax (sternum)	1.19	—
Pterothorax	0.43	1.74
Abdomen	2.45	2.10

Kelloggia brevipes venezolensis n. subsp.

figs. 2

Types, male and female adults, from *Tinamus m. major* (GME-LIN), collected by F. FERNÁNDEZ YÉPEZ at Guayaraca, Estado Bolívar, Venezuela, April 25, 1956.

DIAGNOSIS. — The shape of the frons is nearest to that of *K. b. taoi*, in both sexes, but the marginal carinae which curve backward and inward to anterior condyles of mandibles are quite differently shaped in the male, but similiar in the female. The frons of the male is more circular than in *taoi* while that of the female is more flattened.

This race is unquestionably nearest to *taoi* in the shape of the preantennary portion of the head and in the shape of the endomera, but is very much smaller. There is much less sexual dimorphism in the present race than in any of the other races of *K. brevipes*. The endomera is very similiar in shape to that of *taoi*, but is much smaller (0.057×0.021 against 0.087×0.043); the parameres are much smaller and more slender (0.079×0.042 against 0.174×0.087).

Measurements of the types:

	length♂	width♂	length♀	width♀
Body	1.880	—	2.140	—
Head {	frons	0.303	—	0.336
	temples.....	0.630	0.694	0.760
	occiput	0.510	—	0.608
Prothorax	0.195	0.391	0.239	0.423
Mesothorax	0.315	0.673	0.326	0.700
Metathorax	0.303	0.500	0.303	0.540
Abdomen	1.280	1.000	1.300	1.060
Parameres	0.079	0.042	—	—
Endomera	0.057	0.021	—	—

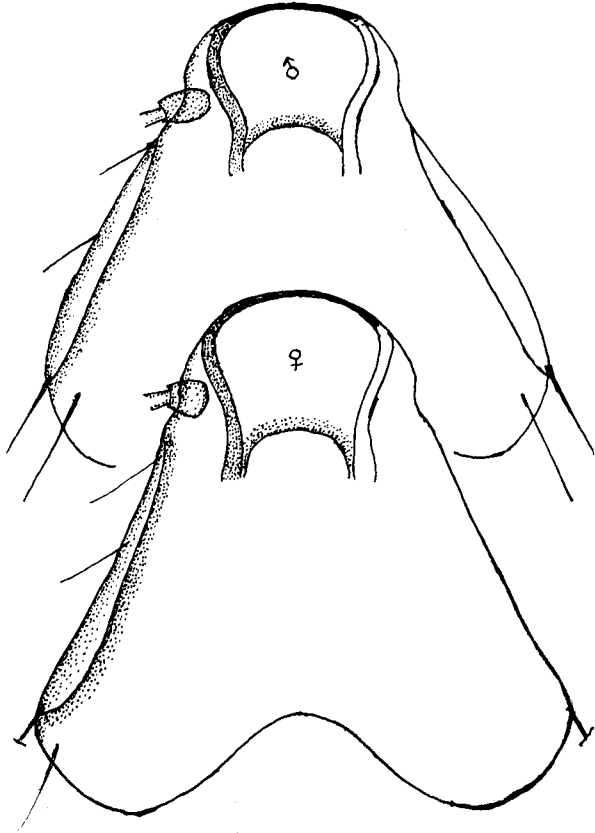


FIG. 2.

Kelloggia brevipes venezolensis. (Head of ♂ and ♀.)

This is the first record of the taking of the genus *Kelloggia* on *Tinamus major major*.

The other species collected on the same specimen of *Tinamus m. major*, from which the preceding subspecies is described, are the following:

Ornichelax olfersi GUIMARAES (4 0 0 4 0 0)

Rhopaloceras aliceps (NITZSCH) (2 0 0 1 0)

Strongylocotes cordiceps (CARRIKER) (0)

RESUMEN

Una especie y una subespecie nuevas de Mallophaga de Venezuela. *Miscelánea neotropical* N° 10. El autor describe detalladamente la nueva especie *Eureum yepezi*, parásito de *Cypseloides rutila rutila* (VIEILLOT), y la nueva subespecie *Kelloggia brevipes venezolensis*, de *Tinamus major major* (GMELIN) dando un breve resumen del género *Eureum*, del cual es *yepezi* la sexta especie descrita; el género *Kelloggia* se menciona por primera vez en el huésped citado.